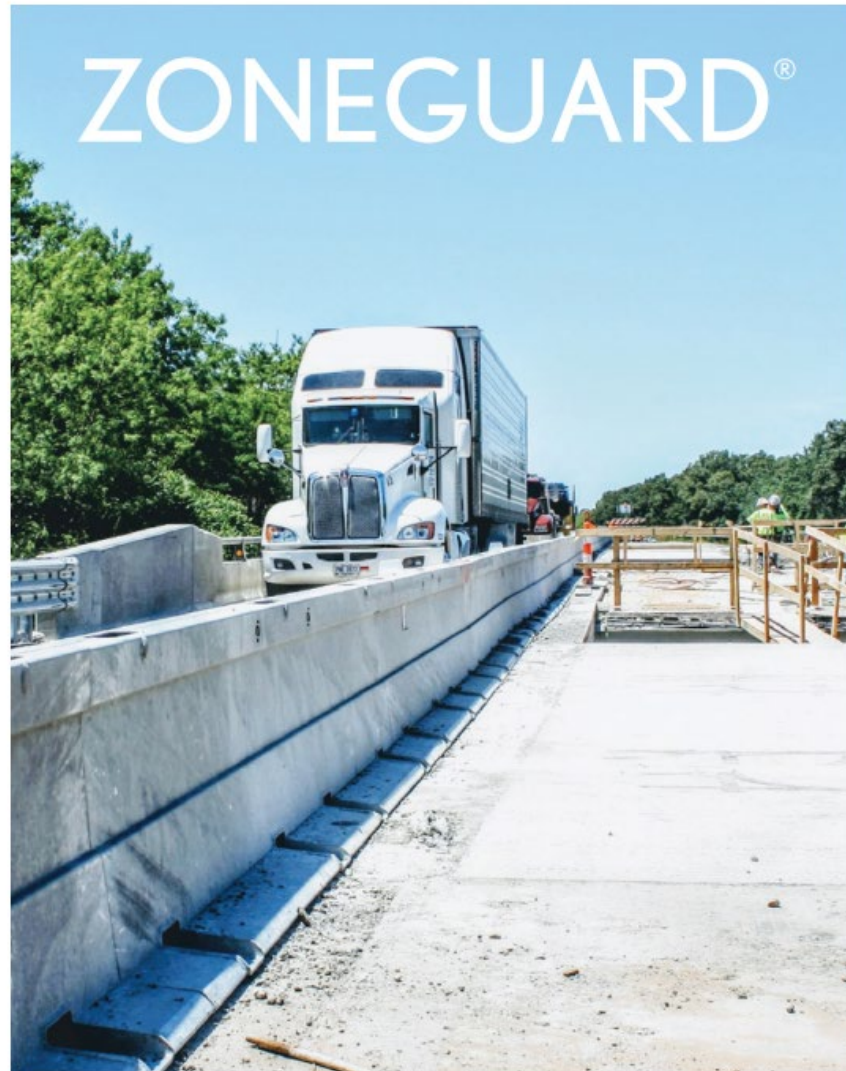


**Temporary
Steel
Barrier –
MASH
compliant**



TRAVEL SAFE. WORK PROTECTED.



ZoneGuard

Easily accessible internal lifting bar for quick rigging

50-foot standard units help accelerate installation and maximize trucking

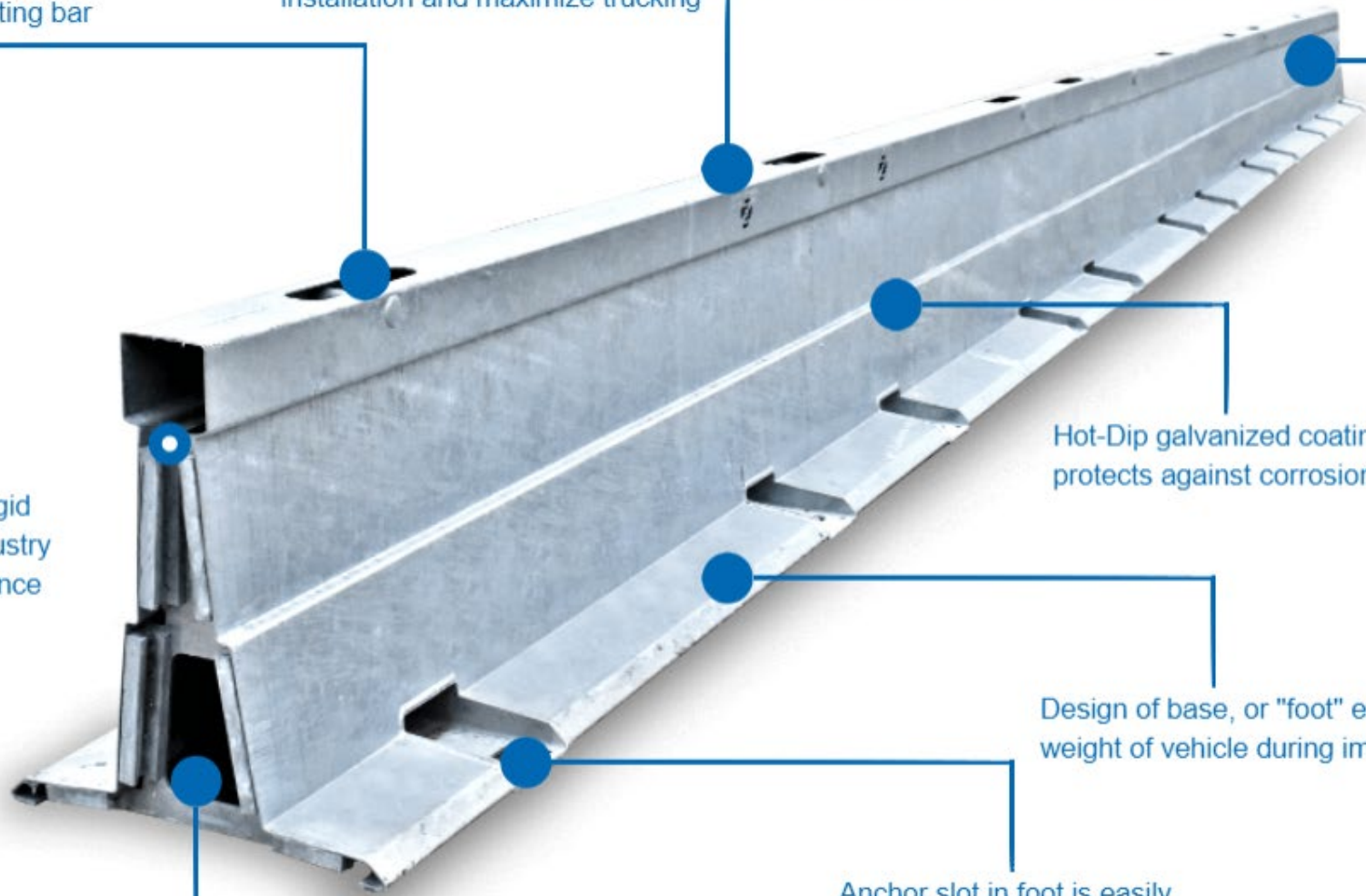
Only 62 lbs. per linear foot
(Compared to 400-500 lbs. for concrete barrier)

Low center of gravity and rigid cross-section produces industry leading crash test performance

Hot-Dip galvanized coating protects against corrosion

Design of base, or "foot" employs weight of vehicle during impact

Anchor slot in foot is easily accessible for drilling





MASH TESTED



UP TO 1,500 LF

PER HOUR



750 LF

PER TRUCK



15-20+ YR

LIFE EXPECTANCY



HOW MANY TRUCKS TO HAUL 3,000 LF OF TEMPORARY BARRIER?

ZONEGUARD® = 4 TRUCKS

CONCRETE = 30 TRUCKS

ZONEGUARD® VS. CONCRETE

The image shows a comparison of hauling capacity. On the left, a single truck is shown carrying a large stack of ZoneGuard temporary barrier sections, secured with yellow straps. On the right, a grid of 30 small truck icons is shown, representing the number of trucks required to haul the same amount of concrete barrier. The text 'ZONEGUARD® = 4 TRUCKS' and 'CONCRETE = 30 TRUCKS' is displayed above the respective icons. The truck in the image has a license plate '101407' and the number '1131' on the rear.



ZoneGuard - Bryte Bend Bridge (03-0F2504)

BCE – Hogni Setberg

First time ZGR was used on a bridge in CA

MASH tested on AC and Concrete pavement

Contractor proposed to use ZGR

District traffic, District Safety – OK

DES Barrier Specialist – NO

Left EOD

ZGR

Construction Zone



Right Exterior Barrier



ZoneGuard

Anchored
every 33'



2 sets of anchors
at the end

Slotted
holes





We never hope for a real-life crash test...
but one night...



Brent calls me around midnight...

- He had recently arrived at the job site and parked behind the ZGR
- Big Rig hit the ZGR and his truck
- Truck damaged in the back and on the side
- Brent was not hurt... just a little shaken
- CHP is talking to the driver
- He gave me a few more details about the incident... and we said good night



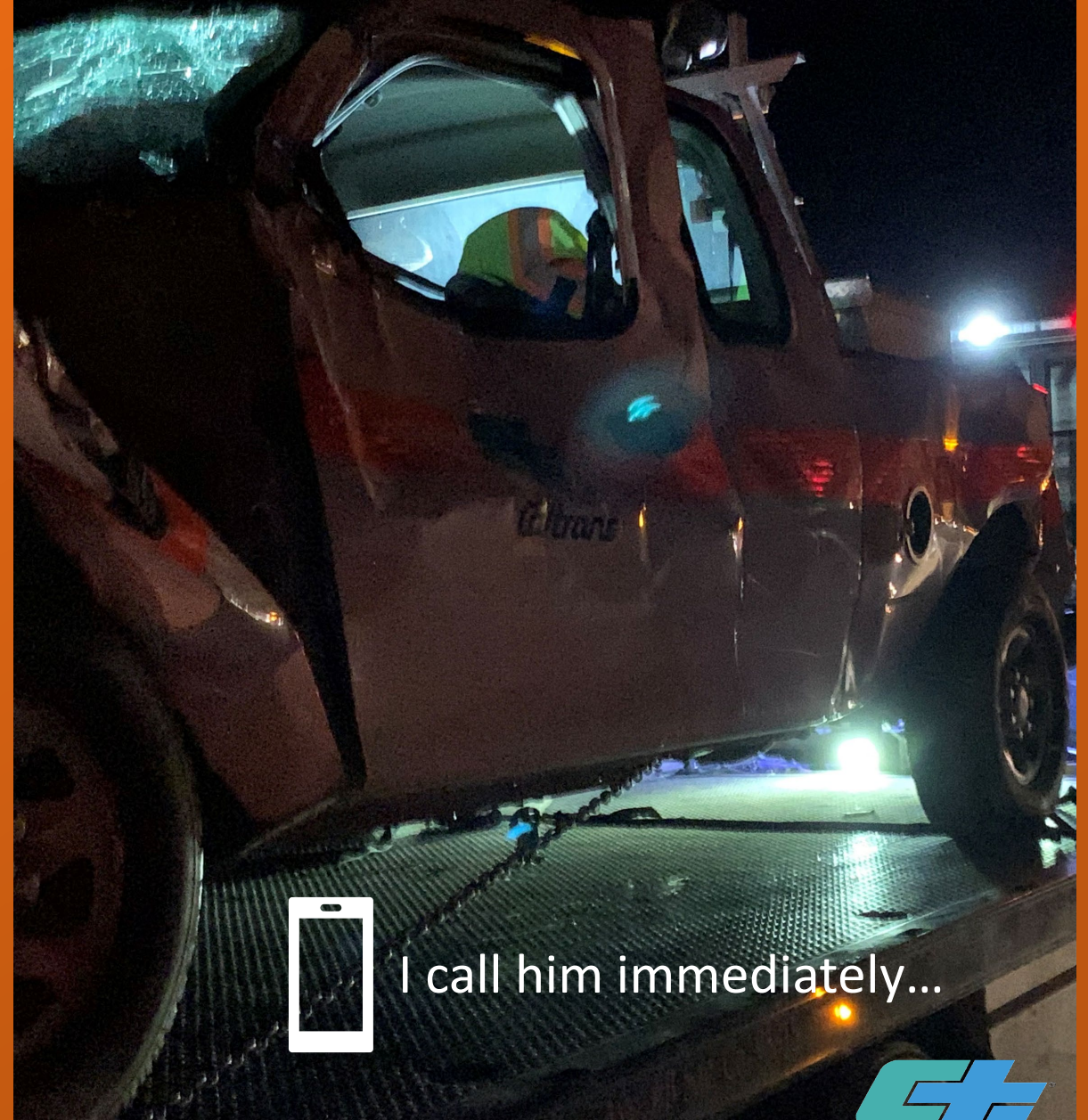


So, I go to bed with this picture in mind...
and very glad that Brent is OK...



The next morning the STD-270 form and photos are in my inbox...





Here is how it happened...

MBGR

ZGR

Median Barrier



Here is how it happened...







Minimal damage to the ZGR.
It did not move.





**ZoneGuard saved Brent's life
(A strong pickup helped too)**

**Have any of you used this or a
similar product?**

How did it go? Cost comparison?

