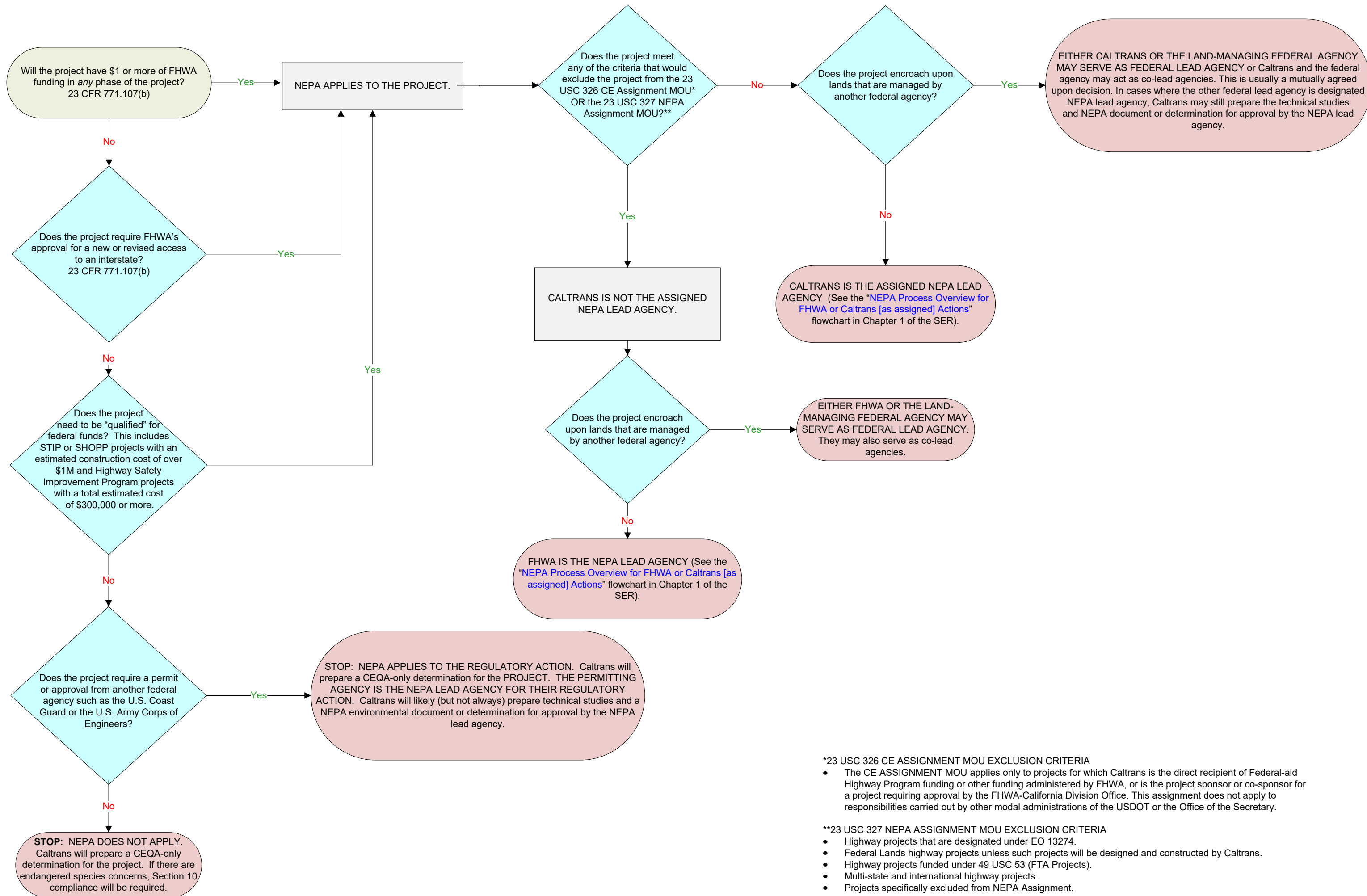


# LEAD AGENCY DECISION TREE FOR FHWA OR CALTRANS (as Assigned) ACTIONS



### \*23 USC 326 CE ASSIGNMENT MOU EXCLUSION CRITERIA

- The CE ASSIGNMENT MOU applies only to projects for which Caltrans is the direct recipient of Federal-aid Highway Program funding or other funding administered by FHWA, or is the project sponsor or co-sponsor for a project requiring approval by the FHWA-California Division Office. This assignment does not apply to responsibilities carried out by other modal administrations of the USDOT or the Office of the Secretary.

### \*\*23 USC 327 NEPA ASSIGNMENT MOU EXCLUSION CRITERIA

- Highway projects that are designated under EO 13274.
- Federal Lands highway projects unless such projects will be designed and constructed by Caltrans.
- Highway projects funded under 49 USC 53 (FTA Projects).
- Multi-state and international highway projects.
- Projects specifically excluded from NEPA Assignment.