

Local Road Safety Plans

California Division Office

Cove at Julia Pfeiffer Burns State Park

Hillary Isebrands, PE, PhD
Senior Roadway Safety Engineer
FHWA Resource Center Safety & Design Team

Hillary.isebrands@dot.gov

720-545-4367



U.S. Department of Transportation
Federal Highway Administration



Local Road Safety Plans (LRSP) Learning Objectives

California Division Office

Cove at Julia Pfeiffer Burns State Park

- Why Local Road Safety Plans?
- Importance of the Four Es
- Resources for Developing LRSPs
- Examples of LRSPs





Toward Zero Deaths



Cove at Julia Pfeiffer Burns State Park

California Division Office

**Last year, 347 people
died on our roads**

0:01 / 0:57

CC HD



U.S. Department of Transportation
Federal Highway Administration

<https://www.youtube.com/watch?v=ra5LK8x86zU>

Why should my community create a Local Road Safety Plan?

California Division Office

Cove at Julia Pfeiffer Burns State Park

- Reduce fatal and severe crashes
- Advance a risk based, data driven and systemic approach to improving safety of local roadways
- Transparency in prioritization and funding of projects
- Leverage funding opportunities
 - Incorporate safety into routine business (maintenance, capital improvements)
- Develop lasting partnerships (4 E's)

 **CALIFORNIA
SAFE ROADS**

2020-2024 Strategic Highway Safety Plan



U.S. Department of Transportation
Federal Highway Administration

Why not stay with SSARP?

California Division Office

Cove at Julia Pfeiffer Burns State Park

SSAR had limited requirements

- Does not include partnerships
- No public outreach was necessary
- No discussion of existing efforts
- No evaluation and / or implementation
- No enforcement or education discussion



Local Road Safety Plan Video



Cove at Julia Pfeiffer Burns State Park

California Division Office

LOCAL ROAD SAFETY PLANS:

Your Map to Safer Roadways

No matter what your resources, a Local Road Safety Plan will guide you to data-driven solutions and safer roads.

https://safety.fhwa.dot.gov/provencountermeasures/local_road/



U.S. Department of Transportation
Federal Highway Administration

<https://www.youtube.com/watch?v=Wzdm798MoI8>



U.S. Department of Transportation
Federal Highway Administration

LRSP “Do-It-Yourself” Pilot

California Division Office

Cove at Julia Pfeiffer Burns State Park

- 2017-2020
- Increase # of agencies preparing & implementing LRSPs
- Ten states, 76 Local Agencies
- Blended Delivery



Webinars



Support Team



Direct Assistance



In-Person Workshop



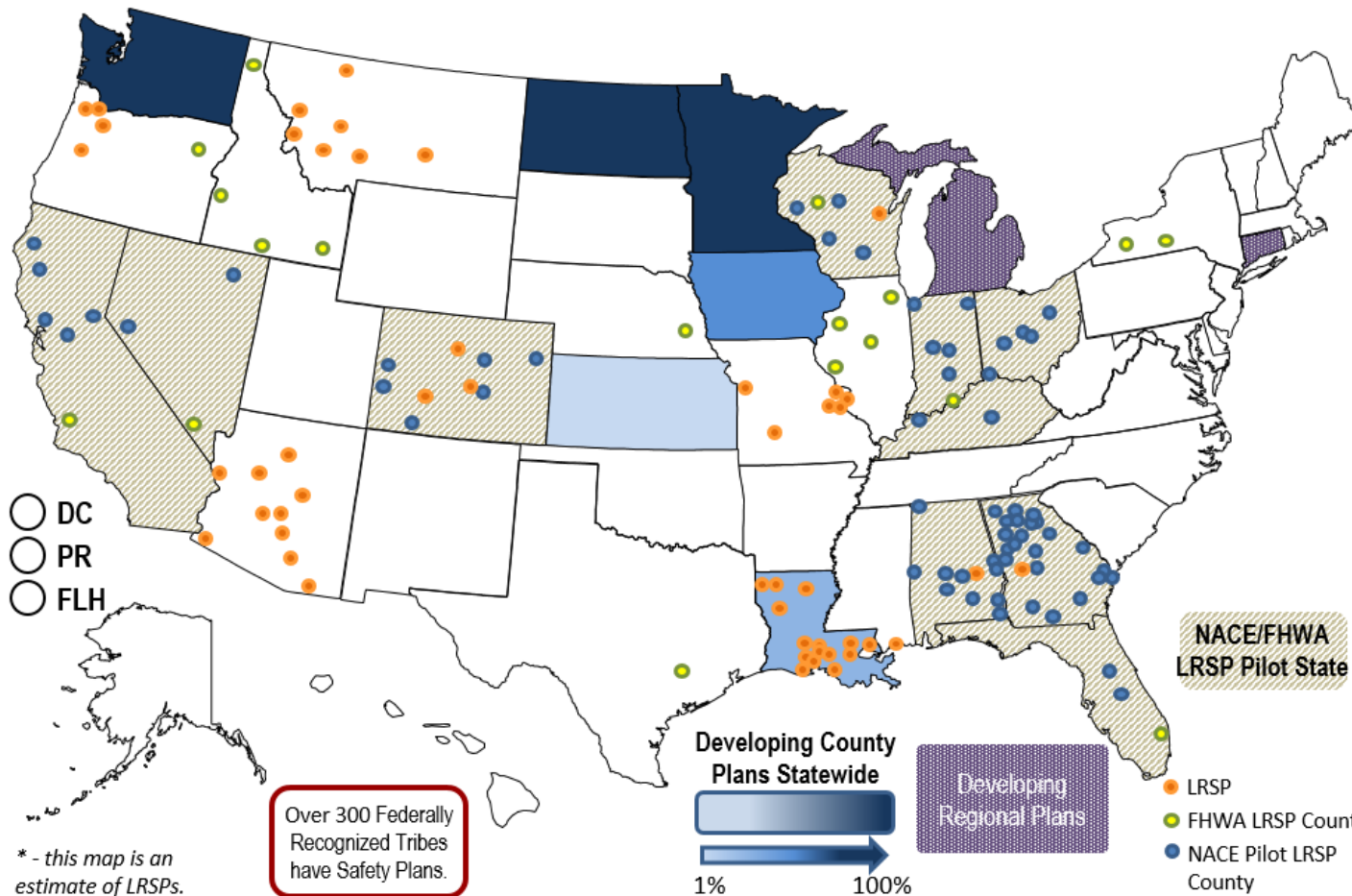
U.S. Department of Transportation
Federal Highway Administration

National Efforts for Local Road Safety Plans

California Division Office

Cove at Julia Pfeiffer Burns State Park

Local Road Safety Plans - 2020*



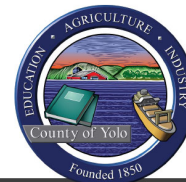
* - this map is an estimate of LRSPs.



California LRSPs

California Division Office

Cove at Julia Pfeiffer Burns State Park



Yolo County Local Road Safety Plan

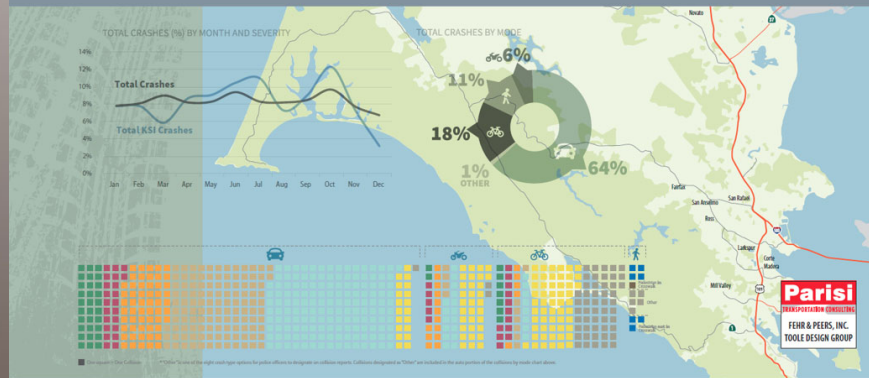
Yolo County Public Works
National Association of County Engineers Local Road Safety Plan Pilot
Accepted and Adopted by the Yolo County Board of Supervisors on 11/17/20

Santa Barbara County, California Local Road Safety Plan



U.S. Department of Transportation
Federal Highway Administration

2018 MARIN COUNTY TRAVEL SAFETY PLAN Systemic Safety Analysis



U.S. Department of Transportation
Federal Highway Administration

2019 Nevada County Local Road Safety Plan



Department of Public Works
12/1/2018

LRSP Leadership Support



California Division Office



News FirstAlert Weather Sports COVID-19 Live Newscasts

State Park

3 Weather Alerts In Effect

Cartersville, GA
March 3, 2020

The Daily Tribune News

WEATHER FORECAST
69.0°, Partly Cloudy

Home Local News Sports Obituaries E-edition Archive Classifieds Subscribe Contact Business Dire

You have 3 free items remaining before a subscription is required. [Subscribe now!](#)

POTENTIAL FHWA PILOT WOULD ADDRESS CAUSES, SEEK SOLUTIONS TO VEHICULAR ACCIDENTS

Cartersville-Bartow MPO contemplates local road safety plan



The Cartersville-Bartow Metropolitan Planning Organization's meeting.
JAMES SWIFT/THE DAILY TRIBUNE NEWS
Posted Tuesday, February 25, 2020

Brown County focuses on road safety in newly proposed budget



(WBAY)
By Brittany Schmidt
Published: Oct. 4, 2018 at 1:56 PM MDT



Franklin County Commissioners General Session
9/11/18
FranklinCountyOhio.gov

General Session - September 11, 2018
30 views • Sep 11, 2018

RESOLUTION NO. 2020-28

BOONE COUNTY BOARD OF COMMISSIONERS

A RESOLUTION IN SUPPORT OF THE VISION ZERO INITIATIVE

A RESOLUTION in support of a countywide Vision Zero initiative, in which Boone County strives to eliminate fatal and serious injuries resulting from traffic crashes, making decisions based on their ability to reach zero deaths on Boone County's transportation system.

WHEREAS, Vision Zero is the simple yet ambitious idea that there is no acceptable number of traffic deaths and serious injuries on our roadways; and

WHEREAS, the Boone County Board of Commissioners recognizes that traffic deaths and serious injuries are not inevitable and



U.S. Department of Transportation
Federal Highway Administration

The Four E's

Cove at Julia Pfeiffer Burns State Park

California Division Office

Four "E"s of Roadway Safety

- Education
- Engineering
- Enforcement
- Emergency Response



LOCAL COLLISION PROFILES

BICYCLE COLLISIONS



California Office of Traffic Safety ranked Unincorporated Marin County 2nd of 58 California counties with high levels of bicycle collisions in 2015.

PEDESTRIAN COLLISIONS (OVER THE AGE OF 65)



California Office of Traffic Safety ranked Unincorporated Marin County 3rd of 58 California counties with high levels of pedestrian collisions involving seniors in 2015.

SPEED RELATED COLLISIONS



California Office of Traffic Safety ranked Unincorporated Marin County 1st of 58 California counties with high levels of speed related collisions in 2015.

MOTORCYCLE COLLISIONS



11% (69) of all collisions in Unincorporated Marin County involved motorcycles, almost double the county average.

HIT OBJECT COLLISIONS



25% (156) of all collisions in Unincorporated Marin County involved hitting fixed objects, more than double the county average.



U.S. Department of Transportation
Federal Highway Administration

Public Health and Transportation Connection

Cove at Julia Pfeiffer Burns State Park

California Division Office

Blueprint for a Healthy Clackamas County



Blueprint for a Healthy Clackamas County

The county's Community Health Improvement Plan, *Blueprint for a Healthy Clackamas County*, sets goals related to access to care, a culture of health, and healthy behaviors. In addition to setting a goal to eliminate crash fatalities, the Blueprint sets goals to improve adverse health outcomes so residents can live and age well in healthy communities. Transportation related factors include commute time, poor air quality, and improving the built environment and transportation network.

DRIVE TO ZERO

Achieving the goal of zero traffic fatalities will involve everyone.

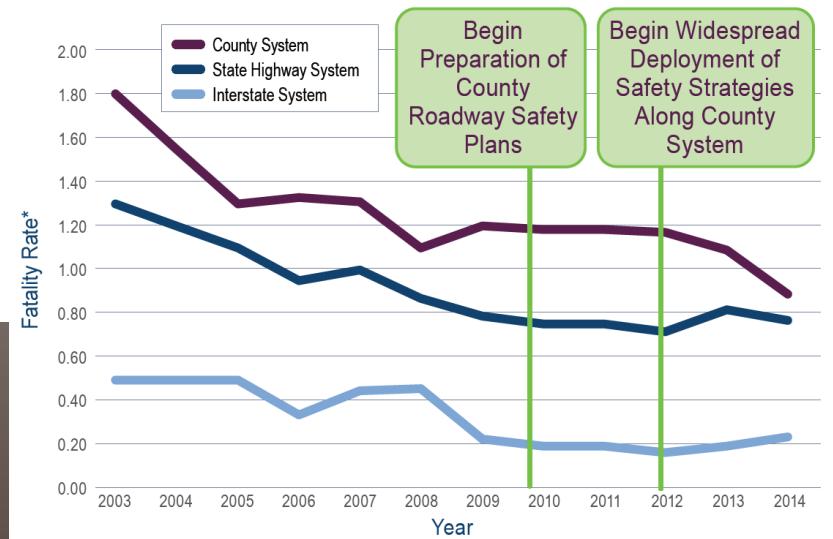
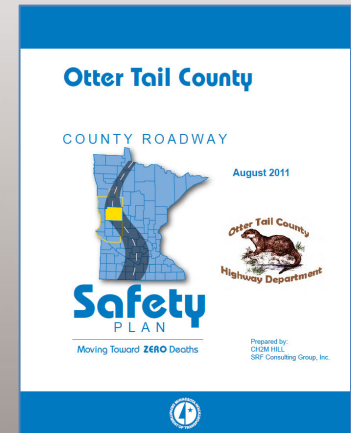


U.S. Department of Transportation
Federal Highway Administration

Success Stories

California Division Office

- Safety funding based on Severe Crash Distribution
- Developed LRSPs for all 87 Counties (\$3.5M), and 8 Districts (\$500K) by 2014
- Also City Plans
- Began updating plans in 2017

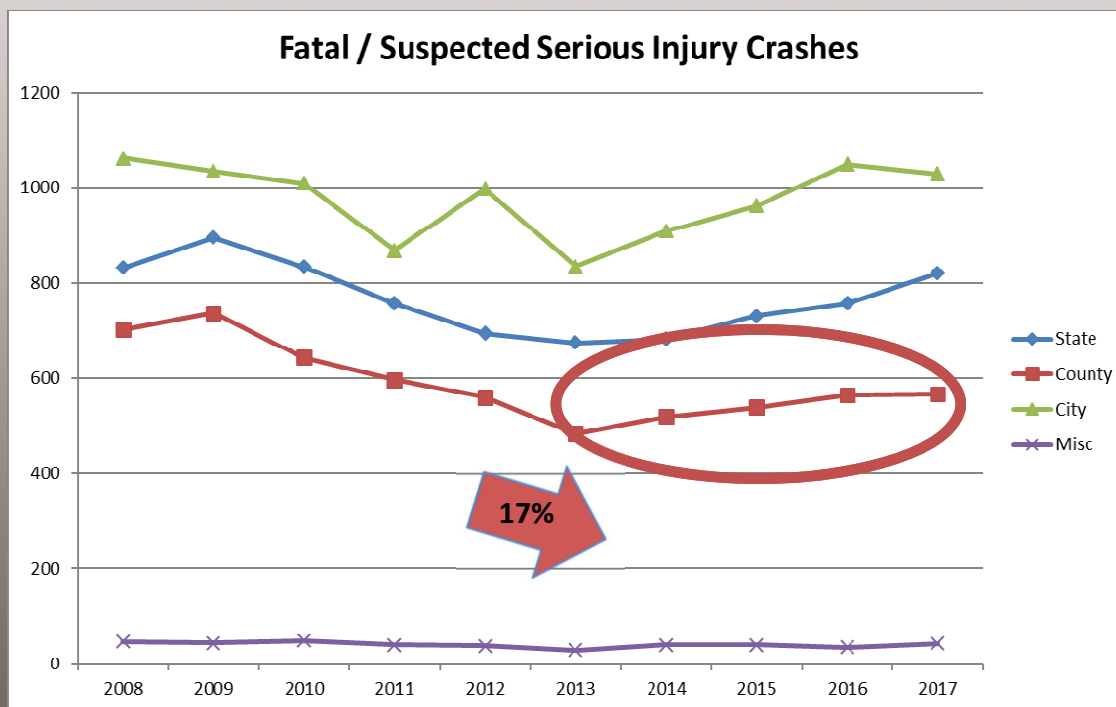


Success Stories

California Division Office

Cove at Julia Pfeiffer Burns State Park

- Safety funds distribution based on severe crashes (70% Local/30% State)
- 36 of 39 Counties have LRSPs
- Several cities have LRSPs
- Each LRSP is different
- Majority of plans completed by local staff



LRSP Resources

Cove at Julia Pfeiffer Burns State Park

California Division Office

California COVID-19 Vaccine Survey Please take 5 minutes to complete a [COVID-19 vaccine survey](#).



[About Caltrans](#) [Contact Us](#) [ADA Certification](#) [Request ADA Compliant Documents](#) [Settings](#) [Translate](#)



Travel



Work with Caltrans



Programs



Caltrans Near Me



Search

[Home](#) | [Programs](#) | [Local Assistance](#) | [Federal and State Programs](#) | [Highway Safety Improvement Program \(HSIP\)](#)

Highway Safety Improvement Program (HSIP)

The Fixing America's Surface Transportation Act (FAST) was signed into law on December 4, 2015. Under FAST, the Highway Safety Improvement Program (HSIP), codified as Section 148 of Title 23, United States Code (23 U.S.C §148), is a core federal-aid program to States for the purpose of achieving a significant reduction in fatalities and serious injuries on all public roads. The Division of Local Assistance (DLA) manages California's local agency share of HSIP funds. California's Local HSIP focuses on infrastructure projects with nationally recognized crash reduction factors (CRFs). Local HSIP projects must be identified on the basis of crash experience, crash potential, crash rate, or other data-supported means.

Program Elements

For more details and information regarding California's Local HSIP, click the texts below or the links to the right.

- [HSIP Guidelines\(PDF\)](#)
- [Local Roadway Safety Manual for California Local Road Owners\(PDF\)](#)
- [Local Roadway Safety Plans \(LRSP\) and Systemic Safety Analysis Report Program \(SSARP\)](#)

HSIP Cycle 10 applications are in the final stage of the project selection process. The list of funded applications is expected to be released around March 1, 2021.

Questions and Contacts

If you have questions, please contact your [District Local Assistance Engineer \(DLAE\)](#).

Continue to check this site periodically for any program updates.

Please feel free to send comments regarding this web site to the [DLA Webmaster](#).

Highway Safety Improvement Program

- [Approved Project Lists](#)
- [Call-for-Projects, Guidelines and Safety Manual](#)
- [Delivery Requirements and Status of Approved Projects](#)
- [Federal Transportation Improvement Program \(FTIP\)](#)
- [Local HSIP Advisory Committee](#)
- [Local Roadway Safety Plan \(LRSP\) and Systemic Safety Analysis Report Program \(SSARP\)](#)
- [Process for State Funded HSIP Projects](#)
- [Roadway Safety Training and Materials](#)

<https://dot.ca.gov/programs/local-assistance/fed-and-state-programs/highway-safety-improvement-program>



U.S. Department of Transportation
Federal Highway Administration

Tribal Safety Plan Resources

Cove at Julia Pfeiffer Burns State Park

California Division Office

tribalsafety.org

Apps National Surface Tr... Roadway Safety Pro... Suggested Sites Imported From IE florida health scare... ARTS, Oregon Depa... LRSP DIY Site Com... Local Road Safety P...

HOME

COMMUNITY

RESOURCES

NEWS/EVENTS

FATALITY DATA

Transportation Safety for Tribes



Join the Mailing List



Funding



Training & Events



Contacts



Pedestrians



Roadway Departure



Impaired Driving



Seat Belts &
Child Safety Seats



Availability of Public Safety
Services



Safety Plans



Safety Data
Collection & Analysis



More...

U.S. Department of Transportation
Federal Highway Administration

<https://www.tribalsafety.org/safety-planning-resources>

LRSP DIY Site

Cove at Julia Pfeiffer Burns State Park

California Division Office

LOCAL ROAD SAFETY PLANS:
Your Map to Safer Roadways

Step 1
Identify
Stakeholders

Step 2
Use
Safety Data

Step 3
Choose Proven
Solutions

Step 4
Implement
Solutions

Finish Line

Welcome to the local road safety plan do-it-yourself website! We are so happy you are here. On this site, you'll find everything you need to make plan that fits your community and gets people home safely. Watch the video below to learn how to use the site and build your plan. If you need help contact us anytime.

How to Use This Site



SCROLL DOWN FOR MORE VIDEOS

Welcome - FHWA Leadership

LOCAL ROAD SAFETY PLANS:
Your Map to Safer Roadways
Welcome

Local Road Safety Plans Overview



 **Tools and Resources**

▶ Guides & Training

▶ LRSP Examples

▶ LRSP Sites

<https://safety.fhwa.dot.gov/LRSPDIY/>


U.S. Department of Transportation
Federal Highway Administration



U.S. Department of Transportation
Federal Highway Administration

Download the LRSP Templates

California Division Office

[AGENCY NAME] Local Road SAFETY Plan

Kick-off Meeting

Date and Time: [INSERT DATE AND TIME]
Location: [INSERT MEETING LOCATION & ADDRESS]

- Welcome remarks by LRSP Coordinator or Champion
- Introductions

LRSP Vision, Mission, and Goals

Overview

This template can be used to help your agency draft Vision and Mission statements for your LRSP. Drafting Vision and Mission Statements can help generate interest in the planning process. Then, after reviewing your safety data, you can identify some data-driven goals or strategies to improve safety in your community. Often, it can take several iterations, and these can be revisited throughout the plan development process.

Vision
Mission
Goals

TITLE OF PLAN

AGENCY
DATE

(OPTIONAL) Agency motto, slogan and/or safety message

LOCAL ROAD SAFETY PLANS: Your Map To Safer Roadways

Step 1 Identify Stakeholders | Step 2 Use Safety Data | Step 3 Choose Proven Solutions | Step 4 Implement Solutions | Finish Line

Building an enthusiastic team with a diverse skill set is the first step to success in making a local road safety plan. This has two main benefits. First, you get lots of perspectives from different stakeholders. Second, a diverse team creates buy in, which is crucial for implementing your plan. Use the tools and examples on this page to make a great team!

SCROLL DOWN FOR MORE

Local Agency Insights: Identify Stakeholders

LOCAL ROAD SAFETY PLAN: IDENTIFY STAKEHOLDERS "So, who should I include as a stakeholder?"

Local Agency Insights: Vision and Mission

Vision

LRSP DIY: Identify Stakeholders

LOCAL ROAD SAFETY PLANS: Your Map to Safer Roadways

IDENTIFY STAKEHOLDERS

TOOLS & RESOURCES

LRSP Templates | Potential Stakeholders | Training

Vision, Mission, and Goals Worksheet

California Division Office

LOCAL ROAD SAFETY PLANS:
Your Map to Safer Roadways

Step 1
Identify Stakeholders

Step 2
Use Safety Data

Step 3
Choose Proven Solutions

Building an enthusiastic team with a diverse skill set is the first step to success in making a local road safety plan. This has two main benefits. First, you get lots of perspectives from different stakeholders. Second, a diverse team creates buy in, which is crucial for implementing your plan. Use the tools and examples on this page to make a great team!

LRSP DIY: Identify Stakeholders

Watch later Share

LOCAL ROAD SAFETY PLANS:
Your Map to Safer Roadways

IDENTIFY STAKEHOLDERS



▶ LRSP Templates

▶ Potential Stakeholders

▶ Training

LRSP Vision, Mission, and Goals

Overview

This template can be used to help your agency draft Vision and Mission statements for your LRSP. Drafting Vision and Mission Statements can help generate interest in the planning process. Then, after reviewing your safety data, you can identify some data driven goals or strategies to improve safety in your community. Often, it can take several iterations, and these can be revisited throughout the plan development process.



VISION

The vision is the dreaming component. A vision statement is an idealized future description of your success. It should inspire, energize, focus, and help you and your partners picture success as you develop the plan. Summarize your Vision in a powerful phrase. This can greatly enhance the effectiveness of your vision statement. This phrase will serve as a trigger to the rest of the vision in the mind of everyone that reads it.

VISION Statement Examples

A world without Alzheimer's disease (Alzheimer's Association)

Create economic opportunity for every member of the global workforce (LinkedIn)

A highway system free of fatalities through a sustained and even accelerated decline in transportation-related deaths and injuries (Toward Zero Deaths)

To help all users of Boone County's transportation system to reach their destination safely. (Boone County, IN Highway Department)

[Draft some possible Vision Statements here...]

▶ Local Agency Insights: Identify Stakeholders

LOCAL ROAD SAFETY PLANS:
Your Map to Safer Roadways

IDENTIFY STAKEHOLDERS

"So... who should I include as a stakeholder?"

▶ Local Agency Insights: Safety Plan Vision and Mission

Vision



U.S. Department of Transportation
Federal Highway Administration

Site Resources

Cove at Julia Pfeiffer Burns State Park

California Division Office

LOCAL ROAD SAFETY PLANS:
Your Map To Safer Roadways

Step 1
Identify
Stakeholders

Step 2
Use
Safety Data

Step 3
Choose Proven
Solutions

Step 4
Implement
Solutions

Finish Line

Welcome to the local road safety plan do-it-yourself website! We are so happy you are here. On this site, you'll find everything you need to make plan that fits your community and gets people home safely. Watch the video below to learn how to use the site and build your plan. If you need help contact us anytime.

How to Use This Site

LRSP DIY: Introduction

Watch later Share

LOCAL ROAD SAFETY PLANS:

Your Map to Safer Roadways

INTRODUCTION

More videos

SCROLL DOWN FOR MORE VIDEOS

Welcome - FHWA Leadership

LOCAL ROAD SAFETY PLANS:
Your Map to Safer Roadways

Welcome

Local Road Safety Plans Overview



Tools and Resources

Guides & Training

LRSP Examples

LRSP Sites

- Champaign County, OH
- Clackamas County, OR
- Cowlitz County, WA
- Freeborn County, MN
- Island County, WA
- Nevada County, CA
- Marin County, CA
- Otter Tail County, MN
- Palm Beach County, FL
- New York City, NY
- Portland, OR
- San Francisco, CA

- California
- Indiana
- Minnesota
- North Dakota
- Washington
- Tribal Safety Plans

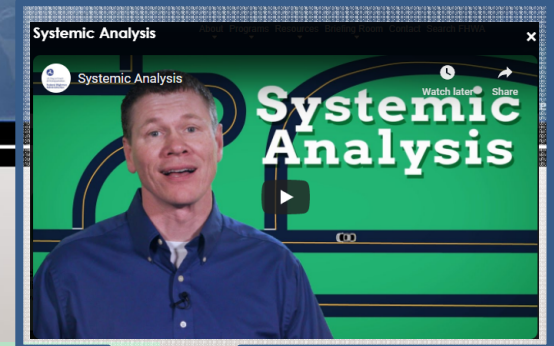


U.S. Department of Transportation
Federal Highway Administration

U.S. Department of Transportation
Federal Highway Administration

Systemic Safety Analysis

California Division Office



<https://youtu.be/iGIFGvxmoiQ>

LOCAL ROAD SAFETY PLANS: Your Map to Safer Roadways

Step 1
Identify
Stakeholders

Step 2
Use
Safety Data

Step 3
Choose Proven
Solutions

Step 4
Implement
Solutions

Finish Line

Your local road safety plan should be data driven as much as possible. Don't have great data? No worries, everyone has some data and you can always get more as you go. Use the resources on this page to help you discover and use the data you have. Remember, do what you can, with what you have, where you are!

▶ Systemic Analysis



▶ Minnesota Case Study



Tools and Resources

▶ Guides

▶ Systemic Tools

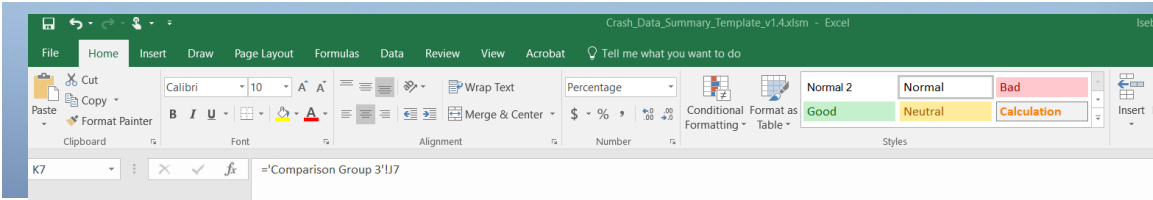
▶ Training

▶ Helpful Links

<https://youtu.be/jVds3AWWqbk>



U.S. Department of Transportation
Federal Highway Administration



Crash Data Summary Template

Year 1 - Year 5 Subject Data	Fatal/Serious Injury Crashes Only								Total Crashes				
	Test Group 3		Test Group 2		Test Group 1		Test County		Test Group 3		Test Group 2		Test
	Year 1 - Year 5	%	Year 1 - Year 5	%	Year 1 - Year 5	%	Year 1 - Year 5	%	Year 1 - Year 5	%	Year 1 - Year 5	%	Year 1 - Year 5
Overall Numbers													
Total # of Collisions	1,289	N/A	994	N/A	117	N/A	7	N/A	55,025	N/A	42,588	N/A	4,567
# of Fatal Collisions	184	14.3%	130	13.1%	20	17.1%	4	57.1%	184	0.3%	130	0.3%	20
# of Serious Injury Collisions	1,105	85.7%	864	86.9%	97	82.9%	3	42.9%	1,105	2.0%	864	2.0%	97
# of Alcohol-Related Collisions	249	19.3%	169	17.0%	33	28.2%	0	0.0%	2,939	5.3%	2,089	4.9%	432
Total # of Fatalities	195	N/A	140	N/A	21	N/A	0	N/A	195	N/A	140	N/A	21
Total # of Serious Injuries	1,989	N/A	1,515	N/A	178	N/A	3	N/A	18,776	N/A	13,460	N/A	1,896
Most Severe Injury Reported													
5 (K)	184	14.3%	130	13.1%	20	17.1%	4	57.1%	184	0.3%	130	0.3%	20
4 (A)	1,105	85.7%	864	86.9%	97	82.9%	3	42.9%	1,105	2.0%	864	2.0%	97
3 (B)	N/A	N/A	N/A	N/A	N/A	N/A	N/A	N/A	3,082	5.6%	2,292	5.4%	306
2 (C)	N/A	N/A	N/A	N/A	N/A	N/A	N/A	N/A	9,284	16.9%	6,486	15.2%	996
1 (O)	N/A	N/A	N/A	N/A	N/A	N/A	N/A	N/A	41,370	75.2%	32,816	77.1%	3,148
Property													
18 Public	1,105	85.7%	651	65.5%	80	68.4%	4	57.1%	52,559.6	95.5%	32,859	77.2%	3,561
20 Private	184	14.3%	343	34.5%	37	31.6%	3	42.9%	2,465.4	4.5%	9,729	22.8%	1,006
Location													
22 Trafficway, On Road	373	28.9%	1	0.1%	19	16.2%	3	42.9%	18,956	34.4%	140	0.3%	633
23 Trafficway, Not on Road	294.02	22.8%	838	84.3%	84	71.8%	2	28.6%	10,475	19.0%	36,340	85.3%	3,477
24 Non-Trafficway	621.98	48.3%	155	15.6%	14	12.0%	2	28.6%	25,594	46.5%	6,108	14.3%	457
By Weekday													

Step 4 Implement Solutions

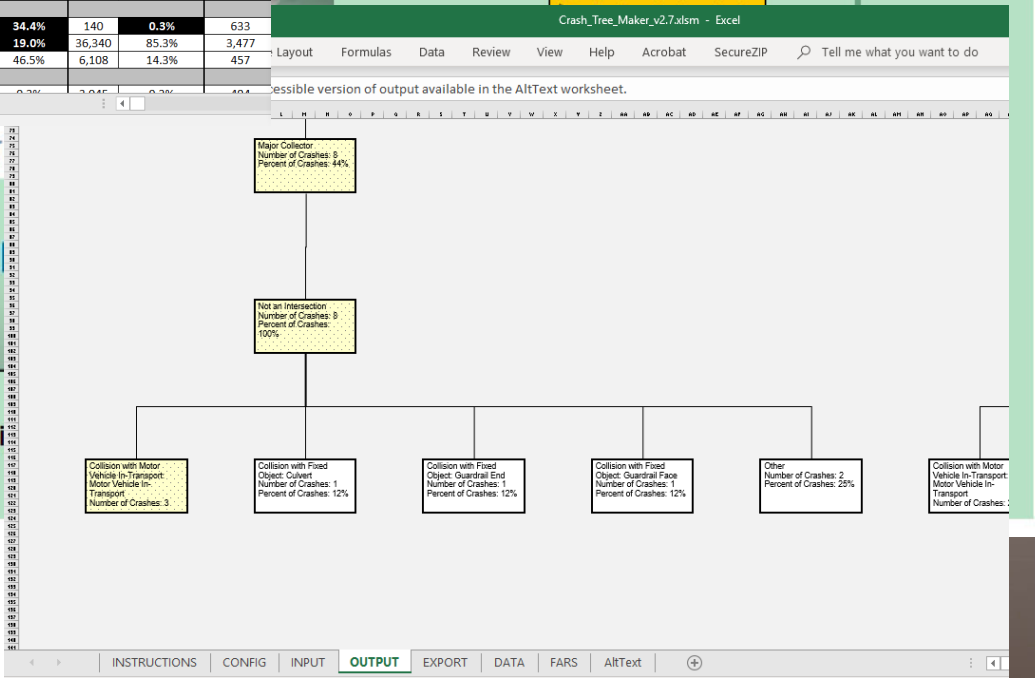
Finish Line

Your Map to Safer Roadways

USE SAFETY

Tools and Resources

▶ GUI



Local Agency Insights

California Division Office

James Nail
Former Traffic and Safety Program Manager
Mesa County, Colorado

Safety Edge
Crash Reduction on Two-Lane Rural Roads

Drop-off	35%
Run-off-road	21%
Head-on RWD	19%
Fatal and injury	11%

Source: CWI Clearinghouse IS 9231, 9231, 9237, 9205

U.S. Department of Transportation
Federal Highway Administration

LOCAL ROAD SAFETY PLANS:
Your Map to Safer Roadways

Step 1 Identify Stakeholders | Step 2 Use Safety Data | **Step 3 Choose Proven Solutions** | Step 4 Implement Solutions

There are many countermeasures proven to save lives on rural roads. It's just a matter of deploying them in the right places. This page has lots of videos and other examples of specific countermeasures to address the most common crash types on local and rural roads. Have a look and discover which ones are best for your community.

LRSP DIY: Choose Proven Solutions

LOCAL ROAD SAFETY PLANS:
Your Map to Safer Roadways

CHOOSE PROVEN SOLUTIONS
"What solutions have other agencies implemented?"

TOOLS & RESOURCES

- ▶ Countermeasures
- ▶ Training
- ▶ Helpful Links

Brian Kelelebet
County Engineer
Buchanan County, Iowa

U.S. Department of Transportation
Federal Highway Administration



U.S. Department of Transportation
Federal Highway Administration

Countermeasure Videos

California Division Office

- Available on DIY Site
 - Roadway Departure
 - Intersections
 - Pedestrians
 - Cross-Cutting Solutions

Step 1 Identify Stakeholders | Step 2 Use Safety Data | Step 3 Choose Proven Solutions | Step 4 Implement Solutions | Finish Line

Roadway Departure Countermeasure Videos

- Low-Cost Safety Improvements: Enhanced Delineation on Horizontal Curves
- Low-Cost Safety Improvements: Longitudinal Pavement Markings
- Pennsylvania DOT High Friction Surface Treatment
- Pennsylvania HFST Success Story - Easton PA
- Low-Cost Safety Improvements for Unpaved Roads
- Focus on Reducing Rural Roadway Departures (FoRRRD) Overview
- DBI: Penn State Treatments
- REDUCING CRASHES. SAVING LIVES.
- Focus on Reducing...

LOCAL ROAD SAFETY PLANS: Your Map to Safer Roadways

Step 1 Identify Stakeholders | Step 2 Use Safety Data | Step 3 Choose Proven Solutions | Step 4 Implement Solutions | Finish Line

There are many countermeasures proven to save lives on rural roads. It's just a matter of deploying them in the right places. This page has lots of videos and other examples of specific countermeasures to address the most common crash types on local and rural roads. Have a look and discover which ones are best for your community.

LOCAL ROAD SAFETY PLANS: CHOOSE PROVEN SOLUTIONS

TOOLS & RESOURCES

- Local Agency Insights: Choose Proven Solutions
- LOCAL ROAD SAFETY PLANS: CHOOSE PROVEN SOLUTIONS
- Roadway Departure Countermeasure Videos



U.S. Department of Transportation
Federal Highway Administration

Training

Cove at Julia Pfeiffer Burns State Park

California Division Office

- Available on DIY Site
 - Systemic Approach, Part 2
 - Low-Cost Safety Improvements

LOCAL ROAD SAFETY PLANS:
Your Map to Safer Roadways

Step 1 Identify Stakeholders | Step 2 Use Safety Data | Step 3 Choose Proven Solutions | Step 4 Implement Solutions

There are many countermeasures proven to save lives on rural roads. It's just a matter of deploying them in the right places. This page has lots of videos and other examples of specific countermeasures to address the most common crash types on local and rural roads. Have a look and discover which ones are best for your community.

LRSP DIY Choose Proven Solutions

LOCAL ROAD SAFETY PLANS:
Your Map to Safer Roadways

CHOOSE PROVEN SOLUTIONS

More videos

Tools and Resources ▶ Countermeasures ▶ Training ▶ Helpful Links

LCI Training Seminar

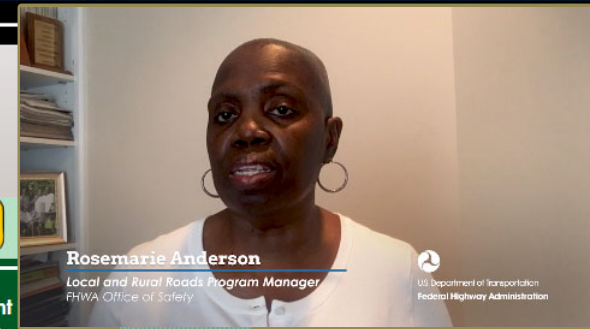
- Module 1: Introduction
- Module 2: Safety Data
- Module 3: Roadway Departure Countermeasure
- Module 4: Roadside
- Module 5: Unsignalized
- Module 6: Unsignalized

Keith Knapp
Iowa LTAP and National Center for Rural Road Safety
kknapp@iastate.edu

Safety Plan Tips Video

Cove at Julia Pfeiffer Burns State Park

California Division Office



LOCAL ROAD SAFETY PLANS:
Your Map to Safer Roadways

Step 1
Identify
Stakeholders

Step 2
Use
Safety Data

Step 3
Choose Proven
Solutions

Step 4
Implement
Solutions

A plan by itself does not save lives. It must be implemented. Use this page for ideas on how to get the ideas in your plan off the paper and into the real world to help real people.



Local Agency Insights:
Implementation

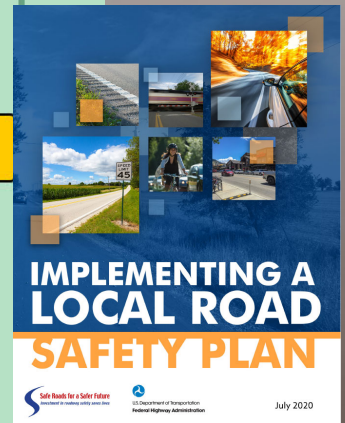
LOCAL ROAD SAFETY PLANS:
Your Map to Safer Roadways

IMPLEMENTATION
Tips on how to communicate
and execute your plan

Safety Plan Tips with Rosemarie
Anderson

Safety Plan Tips

Rosemarie Anderson



Tools and Resources

▶ Guides

▶ Training

▶ Webinars

U.S. Department of Transportation
Federal Highway Administration

Implementation Webinars

California Division Office

Cove at Julia Pfeiffer Burns State Park

LOCAL ROAD SAFETY PLANS:
Your Map to Safer Roadways

Step 1
Identify Stakeholders

Step 2
Use Safety Data

Step 3
Choose Proven Solutions

A plan by itself does not save lives. It must be implemented. Use this page for ideas on how to get the ideas in your plan off the paper and into the real world to help real people.

LOCAL ROAD SAFETY PLANS:
Your Map to Safer Roadways

IMPLEMENTATION
Tips on how to communicate and execute your plan

Safety Plan Tips with Rosemarie Anderson

LRSP DIY Implementation Watch later Share

LOCAL ROAD SAFETY PLANS:
Your Map to Safer Roadways

IMPLEMENTATION

More videos

- LRSP Part #1: LRSP Implementation
- LRSP Part #2: A Roadmap to Getting Home Safely
- Implementing a Local Road Safety Plan
- Local Safety Funding Options

Tools and Resources ▶ Guides ▶ Training ▶ Webinars

U.S. Department of Transportation
Federal Highway Administration

The screenshot shows a webinar window with the following elements:

- Title:** Local Road Safety Plan Implementation Part #1
- Host:** National Center for Rural Road Safety
- Attendees:** A list of participants including Rosemarie Anderson, Kenneth AAG GALT, and others.
- Chat:** A chat window with messages from participants.
- Headouts:** A list of participants with their names and sites.
- Transcript:** A closed captioning pod for the video.
- Where are you joining us from today?:** A list of geographic locations.
- How many people are joining this online training from your location today?:** A poll with options from 1 person to 10 and up.
- Which transportation organization are you with?:** A list of various transportation and safety organizations.

Finish Line

Cove at Julia Pfeiffer Burns State Park

California Division Office

LOCAL ROAD SAFETY PLANS:
Your Map to Safer Roadways

Step 1
Identify Stakeholders

Step 2
Use Safety Data

Step 3
Choose Proven Solutions

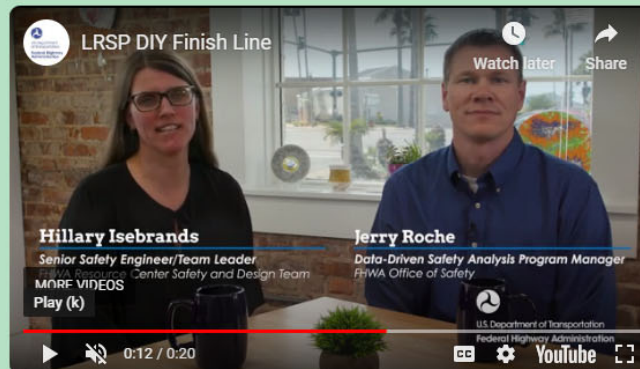
Step 4
Implement Solutions

Finish Line

You made it. Congratulations! You've taken a huge step toward making your community safer. Now that you have a plan, put it to work. We're always here to help if you have trouble. Use the contact information on this page to reach out anytime. And again, thank you for doing your best to get the people under your care home safely.

SCROLL DOWN FOR MORE VIDEOS

▶ Local Agency Insights: Finish Line



For additional assistance, contact us:

Jerry Roche | jerry.roche@dot.gov

Hillary Isebrands | hillary.isebrands@dot.gov

Rosemarie Anderson | rosemarie.anderson@dot.gov

Tribal contact: Adam Larsen | adam.larsen@dot.gov

LOCAL ROAD SAFETY PLANS:
Your Map to Safer Roadways

FINISH LINE
Get People Home Safely!



U.S. Department of Transportation
Federal Highway Administration



U.S. Department of Transportation
Federal Highway Administration

FHWA LRSP DIY Website Demo!



Cove at Julia Pfeiffer Burns State Park

California Division Office

LOCAL ROAD SAFETY PLANS: Your Map to Safer Roadways

Step 1
Identify
Stakeholders

Step 2
Use
Safety Data

Step 3
Choose Proven
Solutions

Step 4
Implement
Solutions

Finish Line

Welcome to the local road safety plan do-it-yourself website! We are so happy you are here. On this site, you'll find everything you need to make plan that fits your community and gets people home safely. Watch the video below to learn how to use the site and build your plan. If you need help contact us anytime.

How to Use This Site



SCROLL DOWN FOR MORE VIDEOS

Welcome - FHWA Leadership

LOCAL ROAD SAFETY PLANS:
Your Map to Safer Roadways
Welcome

Local Road Safety Plans Overview



Tools and Resources

▶ Guides & Training

▶ LRSP Examples

▶ LRSP Sites

<https://safety.fhwa.dot.gov/LRSPDIY/>



U.S. Department of Transportation
Federal Highway Administration



U.S. Department of Transportation
Federal Highway Administration



**"Do what you can,
with what you have,
where you are."
– *Theodore Roosevelt***





LRSP Learning Objectives

California Division Office

Cove at Julia Pfeiffer Burns State Park

- Why Local Road Safety Plans?
- Importance of the Four Es
- Resources for Developing LRSPs
- Examples of LRSPs



Local Road Safety Plans

California Division Office

Cove at Julia Pfeiffer Burns State Park

Thank you!

Hillary Isebrands, PE, PhD

Senior Roadway Safety Engineer

FHWA Resource Center Safety & Design Team

Hillary.isebrands@dot.gov

720-545-4367



U.S. Department of Transportation
Federal Highway Administration