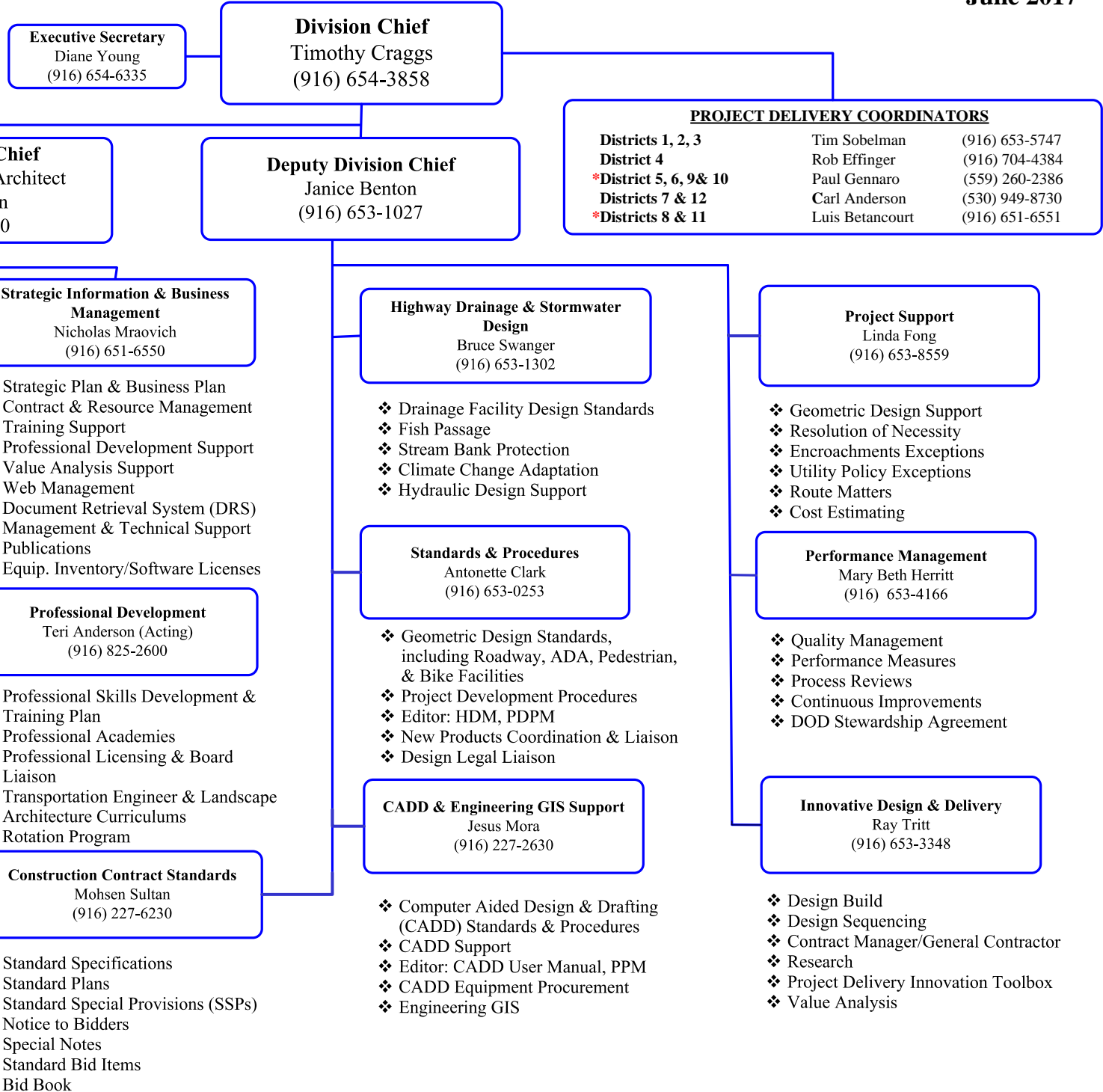




DIVISION OF DESIGN

June 2017



- ❖ SHOPP Roadside Preservation
- ❖ Worker Safety
- ❖ District Support
- ❖ Landscaped Freeways
- ❖ Landscape Architecture Coordination

- ❖ Roadside Design Standards
- ❖ Roadside Management
- ❖ Research & Innovation
- ❖ Source Control
- ❖ Water Conservation
- ❖ Resource Conservation
- ❖ SMARA

- ❖ Strategic Plan & Business Plan
- ❖ Contract & Resource Management
- ❖ Training Support
- ❖ Professional Development Support
- ❖ Value Analysis Support
- ❖ Web Management
- ❖ Document Retrieval System (DRS) Management & Technical Support
- ❖ Publications
- ❖ Equip. Inventory/Software Licenses

- ❖ Professional Skills Development & Training Plan
- ❖ Professional Academies
- ❖ Professional Licensing & Board Liaison
- ❖ Transportation Engineer & Landscape Architecture Curriculums
- ❖ Rotation Program

- ❖ Standard Specifications
- ❖ Standard Plans
- ❖ Standard Special Provisions (SSPs)
- ❖ Notice to Bidders
- ❖ Special Notes
- ❖ Standard Bid Items
- ❖ Bid Book

- ❖ Drainage Facility Design Standards
- ❖ Fish Passage
- ❖ Stream Bank Protection
- ❖ Climate Change Adaptation
- ❖ Hydraulic Design Support

- ❖ Geometric Design Standards, including Roadway, ADA, Pedestrian, & Bike Facilities
- ❖ Project Development Procedures
- ❖ Editor: HDM, PDPM
- ❖ New Products Coordination & Liaison
- ❖ Design Legal Liaison

- ❖ Computer Aided Design & Drafting (CADD) Standards & Procedures
- ❖ CADD Support
- ❖ Editor: CADD User Manual, PPM
- ❖ CADD Equipment Procurement
- ❖ Engineering GIS

- ❖ Geometric Design Support
- ❖ Resolution of Necessity
- ❖ Encroachments Exceptions
- ❖ Utility Policy Exceptions
- ❖ Route Matters
- ❖ Cost Estimating

- ❖ Quality Management
- ❖ Performance Measures
- ❖ Process Reviews
- ❖ Continuous Improvements
- ❖ DOD Stewardship Agreement

- ❖ Design Build
- ❖ Design Sequencing
- ❖ Contract Manager/General Contractor
- ❖ Research
- ❖ Project Delivery Innovation Toolbox
- ❖ Value Analysis

“Caltrans provide a safe, sustainable, integrated and efficient transportation system to enhance California’s economy and livability”